

Working With Landowners

Government Agencies (National Parks AONBs etc.)

Local Governments (HCC , IoWCC, Cities etc.)

Military (DIO etc.)

National Charities (NT, RSPB etc.)

**Private Land Owners (Estate Managers, Head
Gamekeepers etc.)**

Land Owner Aims & Our Responses

Govt Agencies .	Success of plans/Obj's	News & Advice
Local Govt .	Value ex scarce resources	Take advice/ Like volunteers
Military .	Low interference	Clear results/ tough advice
Natl Charities	Reputation/ donor support	News Help
Private .	Cash flow / DEFRA	Good outcome/ low interference

Working with Land Owners

Influence

1. Get to know responsible manager (s).
2. Give them a butterfly chart !
3. Occasional newsbytes during season
4. Talk to workforce (not military)
5. **Present an Annual Report** - with summary, status of site, and some comment on the wider picture. (*after a proof reading!*) digital & hard copy
6. Section comparison data will be useful

Table 2	Danebury Sectional Butterfly Sightings Data 2017												
Section >>>>	1	2	3	4	5	6	7	8	9	10	11	12	Totals
Small Skipper	4		3		3	5		4			1	5	25
Essex Skipper	5		3		1	2		3			1	1	16
Small/Essex Skipper	3	6				4			2	2	3		20
Large Skipper					4	3		1					8
Dingy Skipper		5	4		1			1	2				13
Grizzled Skipper		4	1		2								7
Clouded Yellow			1					1					2
Brimstone	5	34	22	56	59	9	60	17	9	9			280
Large White	1	10	17	23	13	3	9	6	2	2	1	1	88
Small White	5	36	21	26	8	4	16	12	4	7	1	5	145
Green-veined White	4	4	4	19	1	1	5	2	1	4			45
Orange Tip	1	3		3			2						9
Green Hairstreak		2	1		2			2					7
Small Copper	1		1		3		1	2					8
Brown Argus		2	3	12			5	6	6			1	35
Common Blue	9	37	21	1	12	10	14	47	21	11	3	2	188
Adonis Blue								1					1
Holly Blue		1		1			1	1					4
Red Admiral	2	7	4	21	5	2	6	1	1	2	2	2	55
Painted Lady		2	1										3
Small Tortoiseshell	10	10	5	2			3	4	1	1	1	6	43
Peacock		4	3	10	2	1	3	2	1	2			28
Comma		2	1	10	7	1	3	1		2		1	28
Dark Green Fritillary		1	1										2
Speckled Wood		6		25	11	3	3						48
Marbled White	40	47	36	7	10	29	6	17	26	16	30	10	274
Gatekeeper	6	26	17	4	14	7	19	13	4	5	9	16	140
Meadow Brown	43	289	141	50	147	110	134	240	59	83	132	50	1478
Small Heath	2	26	16		2	6	2	5	3	15	5	8	90
Ringlet	16	42	15	11	17	16	15	4	4	5	1	3	149
Section Totals	157	606	342	281	324	216	307	393	146	166	190	111	3239
Species per Section	17	24	24	17	21	18	19	24	16	15	13	14	

DANEbury TRANSECT													
Totals by Section		1	2	3	4	5	6	7	8	9	10	11	12
	2017	157	606	342	281	324	216	307	393	146	166	190	111
	2016	173	529	339	266	377	437	246	266	113	250	263	101
over 10 years	2015	210	602	487	297	586	386	366	380	124	218	210	165
	2014	107	567	300	247	564	238	296	431	147	232	240	108
	2013	167	615	342	258	567	274	526	657	148	362	379	195
	2012	337	453	589	139	560	701	223	781	297	411	691	58
	2011	292	661	492	476	839	349	686	1147	346	277	185	71
	2010	152	988	514	462	980	322	873	1070	364	124	74	72
	2009	102	644	419	453	900	347	862	835	292	202	93	59
	2008	134	431	267	149	569	420	431	571	265	127	67	78
Diversity (Species per Section)		1	2	3	4	5	6	7	8	9	10	11	12
	2017	17	24	24	17	21	18	19	24	16	15	13	14
	2016	16	23	20	15	20	17	15	21	14	15	13	11
	2015	20	24	27	19	27	20	23	24	17	17	16	13
	2014	15	23	25	19	24	19	24	24	18	16	15	12
	2013	18	24	21	15	23	20	19	23	20	17	16	15
	2012	16	21	18	16	17	18	17	19	17	15	10	6
	2011	19	24	24	21	23	19	22	19	21	13	10	12
	2010	17	24	24	20	26	18	26	24	22	13	12	12
	2009	14	21	20	23	25	22	22	23	17	15	14	9
	2008	14	18	16	13	20	20	20	17	12	8	8	10

Fig 6 Butterfly Sighting totals per Section by year

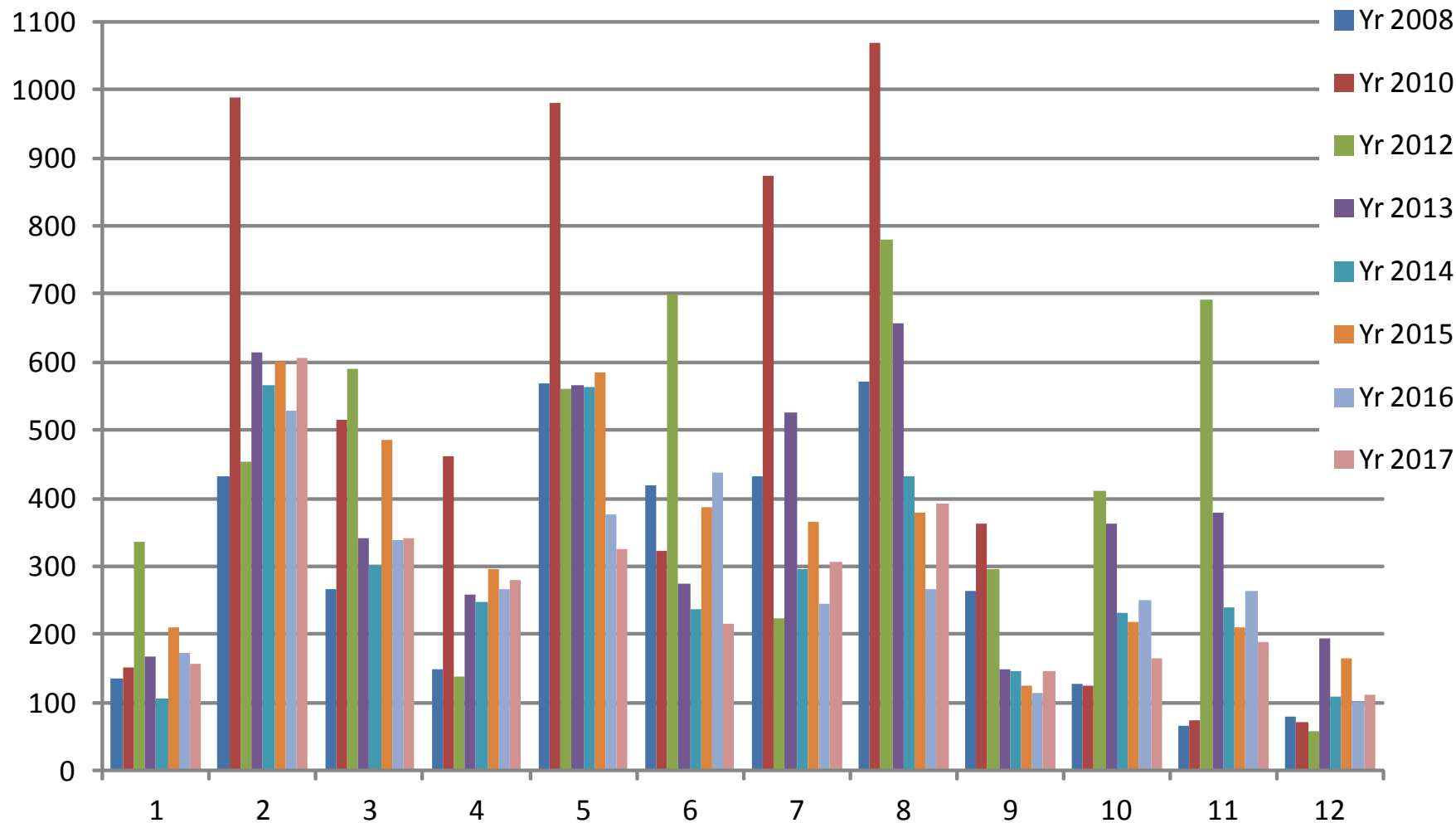


Table 1 Danebury 2017 & 2008 to 2016 Butterfly Species Present

Species	2017	2016	2015	2014	2013	2012	2011	2010	2009	2008	Breeding Status * Over 9 years
Small Skipper	25	27	42	34	25	9	8	7	8	10	Probable
Essex Skipper	16	21	55	14	5	0	1	3	6	3	Probable
Small/Essex Skipper (additional)	20	7	7	22	5	1	1	13	33	3	
Large Skipper	8	12	33	44	25	14	27	32	21	4	Proved
Dingy Skipper	13	25	64	22	37	22	46	16	21	11	Probable
Grizzled Skipper	7	13	18	23	31	26	63	43	32	27	Proved
Clouded Yellow	2	1	2	3	4	0	0	0	2	0	
Brimstone	280	283	435	312	501	117	283	266	213	168	Proved
Large White	88	181	128	93	279	101	284	358	902	198	Proved
Small White	145	305	252	177	508	31	264	162	192	175	Proved
Green-veined White	45	54	60	54	91	85	283	189	197	185	Probable
Orange Tip	9	17	24	31	14	7	12	29	11	5	
Green Hairstreak	7	3	13	5	9	2	16	15	3	2	Proved
Small Copper	8	0	3	1	5	3	0	4	2	1	
Brown Argus	35	7	24	72	28	15	63	250	109	26	Proved
Common Blue	188	80	252	326	178	49	203	530	258	104	Proved
Chalk Hill Blue	0	3	68	56	402	796	1766	1968	504	266	Ceased
Adonis Blue	1	0	0	1	0	0	32	31	2	1	Ceased
Holly Blue	4	4	1	3	3	3	3	13	5	0	
Red Admiral	55	34	15	24	14	9	30	24	15	10	
Painted Lady	3		5	2	2	2	6	3	700	2	Proved
Small Tortoiseshell	43	19	51	165	38	10	51	55	46	2	Proved
Peacock	28	14	68	50	38	22	45	56	82	28	Proved
Comma	28	4	23	3	14	4	15	26	13	5	Proved
Dark Green Fritillary	2	2	14	2	2	11	17	11	2	3	
Silver-washed Fritillary	0	2	5	5	3	2	0	7	1	0	Proved
Speckled Wood	48	39	46	55	83	9	76	58	69	54	Proved
Marbled White	274	707	504	434	246	210	71	238	257	243	Proved
Gatekeeper	140	117	197	39	24	23	51	54	93	71	Proved
Meadow Brown	1478	1052	1294	1008	1960	3303	1752	1251	1156	1872	Proved
Small Heath	90	131	173	201	277	212	228	148	75	49	Proved
Ringlet	149	203	155	167	107	142	123	135	145	81	Proved
All species TOTAL	3239	3367	4031	3478	4958	5240	5821	5995	5208	3509	20 proved
Number of Species	29	28	30	31	30	28	28	30	31	28	

Four Years of Danebury Transects

Fig 4 Compare Weekly Totals

